

9to5 Signature Card 3.0

Grade: A



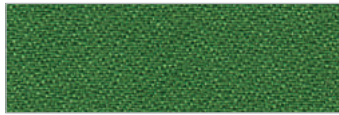
EXPRESSSHIP
FABRICS

9to5[®]
s e a t i n g

Crepe



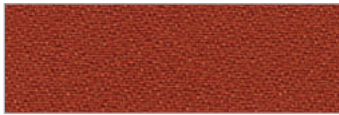
Beige



Fern



Gray



Orange

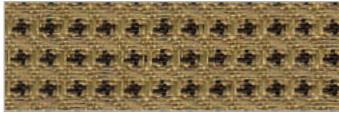


Dark Blue

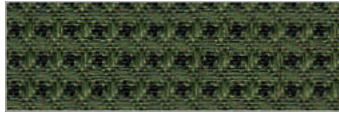


Black

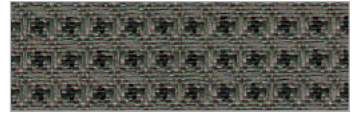
Matrix



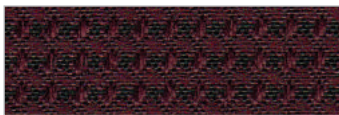
Champagne



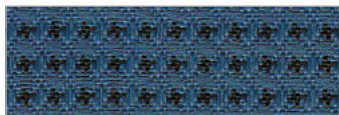
Fern



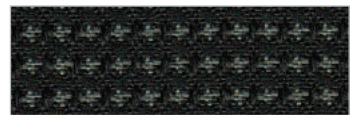
Lead



Plum



Peacock

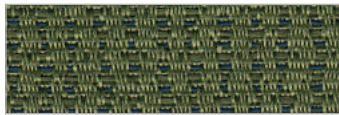


Coal

Bingo



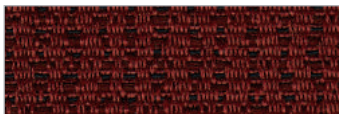
Champagne



Green



Gray



Cherry



Navy



Black

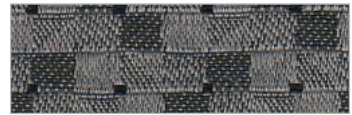
Mosaic



Camel



Latte



Slate



Flame

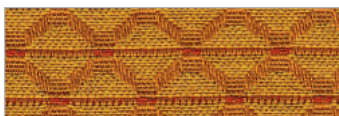


Ocean

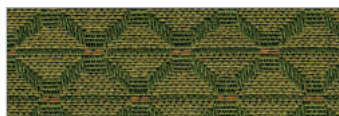


Nightfall

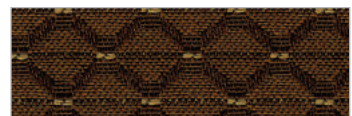
Tango



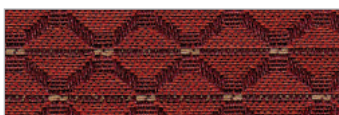
Honey



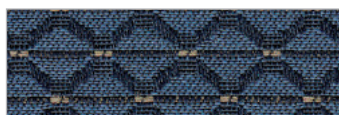
Wasabi



Bark



Ruby



Lake



Charcoal

Echo



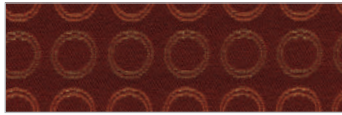
Lynx



Hemlock



Stone



Rose

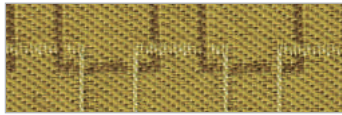


Reflection

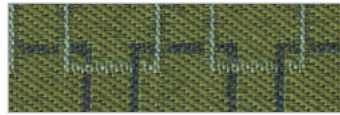


Flint

Avant



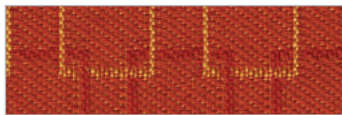
Waffle



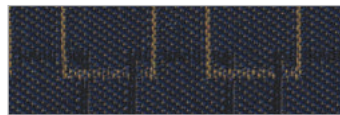
Spruce



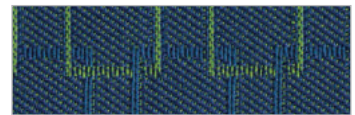
Steel



Chai



Denim



Reef

Air Grid Mesh



Black

Mesh Pattern MO



Black

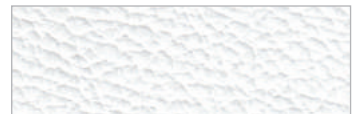
Pauly



Camel



Black



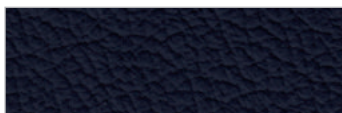
White



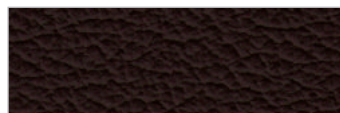
Ash



Mist



Baltic



Cafe



Taupe






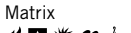

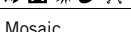




Mushroom



Saddle



Mahogany

54" Pattern	Fiber Content & Backing	Finish	Abrasion (D.R.)	Light-fastness	Cleaning Code	Grade
Air Grid Mesh 	100% Polyester	Water Repellent	250,000	40 Hrs. Class 4	W	A/TO1
Mesh MO 	Polyester & Polyelastomer	Water Repellent	100,000	40 Hrs. Class 4	W	MO
Crepe 	100% Polyester	Water Repellent	250,000	40 Hrs. Class 4	W	A
Matrix 	100% Polyester	Water Repellent	100,000	40 Hrs. Class 4	W	A
Bingo 	100% Polyester	Water Repellent	175,000	40 Hrs. Class 4	W	A
Mosaic 	100% Polyester	Water Repellent	175,000	40 Hrs. Class 4	W	A
Tango 	100% Polyester	Water Repellent	100,000	40 Hrs. Class 4	W	A
Echo 	100% Polyester	Water Repellent	100,000	40 Hrs. Class 4	W	A
Avant 	100% Polyester	Water Repellent	100,000	40 Hrs. Class 4	W	A
Pauly 	100% Vinyl/ PVC Free Polyester Backing	Water Repellent	100,000	40 Hrs. Class 4	W	A

EXPLANATION OF ACT ICONS FOR UPHOLSTERY

FIRE RETARDANCY

Flammability testing determined as fabric's resistance to burning.



PASSES
California 117

COLORFASTNESS WET & DRY CROCKING

Colorfastness to wet & dry crocking refers to the rubbing off of color from the fabric onto clothing, hands or other materials and can occur under wet or dry conditions.



PASSES
AATCC 8-1974 Dry Crocking, Class 4 minimum: Wet Crocking, Class 3 minimum.

COLORFASTNESS TO LIGHT

Colorfastness to light is the degree to which fabric will retain its color when exposed to light.



PASSES
AATCC 16A-1974 or AATC 16E-1976; Class 4 minimum at 40 Hours
NOTE: Class 4 minimum at 60 hours is recommended for direct sunlight exposure situations.

PHYSICAL PROPERTIES

3 Physical property tests include: brush pill test to determine a fabric's pilling. Breaking/tensile strength is the ability of a fabric to withstand tension without breaking or tearing. Seam slippage is the pulling apart of fabrics at the seam.



PASSES
Brush Pill ASTM D3511, 3-4 minimum. Breaking Strength ASTM D3597-D1682-64 (1975) 50lbs. minimum in warp & weft Seam Slippage ASTM D3597-D434-75 25lbs. minimum in warp & weft.

ABRASION

Abrasion is the ability of fabric to withstand damage from wear and rub. This is a general contract specification as well as a heavy duty specification.



General Contract
ASTM 3579 modified (#10 cotton duck);
15,000 double rubs Wyzenbeek Method



Heavy Duty
ASTM 3579 modified (#10 cotton duck);
30,000 double rubs Wyzenbeek Method or ASTM
D4966 (with 21oz. weight);
40,000 rubs Martindale Method

CLEANING CODE DEFINITIONS

W: Water-based cleaning agents or foam may be used.

Fabrics dyed on different dates may have slight variations in color. All specifications are subject to change without notice.



Memo samples available.
Please contact the factory for larger swatches.
888-925-SEAT • 9to5seating.com

